



House & Land Package

6 Carwoola Drive, Orange NSW, 2800



House & Land Price : \$1,195,000



Total Area: 306.1m² OR 32.9 Squares

Inclusions:

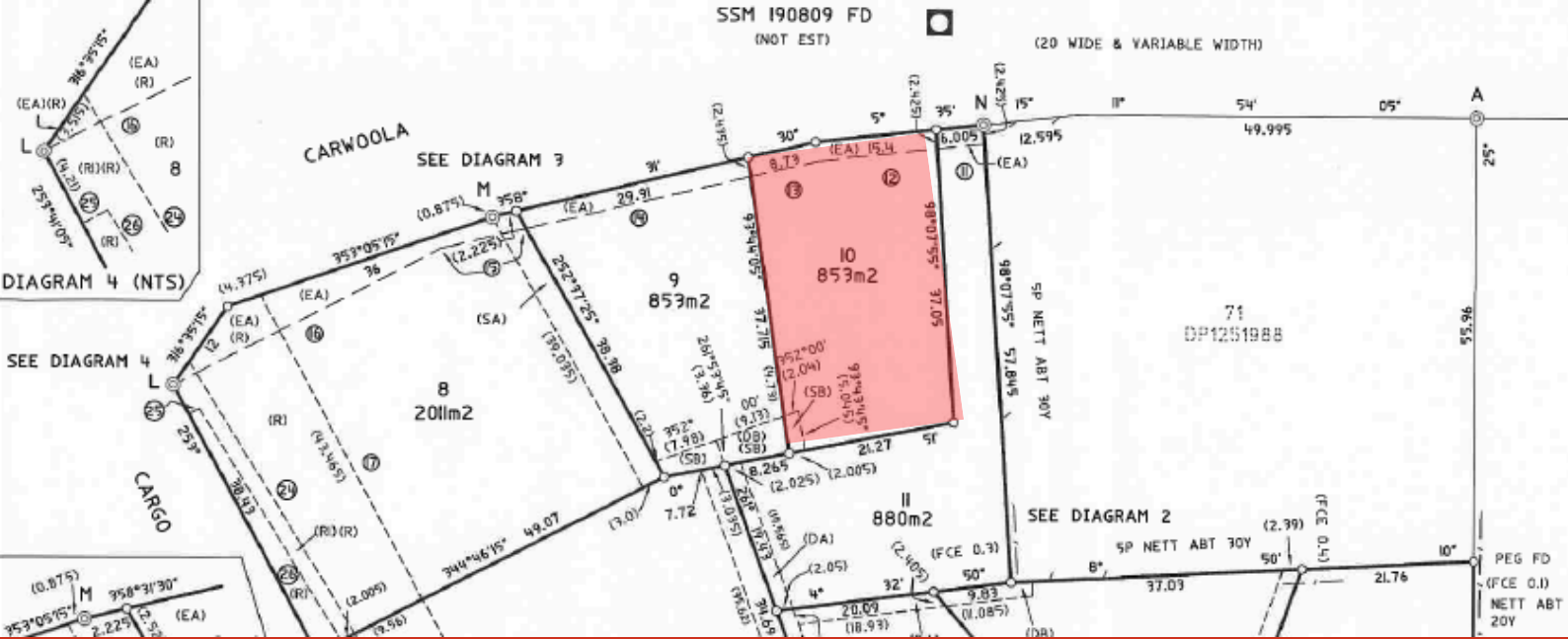
Internal

- Four Bedrooms - Luxurious master retreat with ensuite and generous walk-in-robe.
- Bedrooms 2, 3, & 4 feature built in wardrobes for your convenience.
- 7 star home.
- Double glazed awning windows through out.
- A modern gallery style kitchen with a walk-in pantry
- Smeg appliances
- Kitchen design includes your choice of Sheen or Satin profile doors & draws in your selected colours.
- Roller blinds from our exclusive range to all living areas and bedrooms.
- Your choice of Haus 25, Misha, Lina or Platz

External

- A covered alfresco space off the main living, perfect for outdoor dining.
- A 3000L water tank for all of your extra water storage.
- Complete landscaping and 1800mm High Colorbond fencing to all boundaries





House & Land Package

6 Carwoola Drive, Orange NSW, 2800

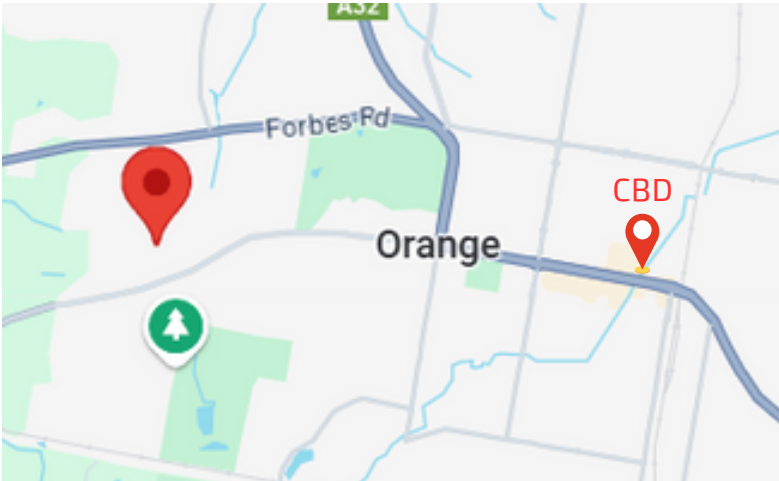


House & Land Price : \$1,195,000

Block Specifications:

About West Orange

6 Carwoola Drive is a 853m² block located in prestigious West Orange. Only a short 3.26km from the CBD, 1.92km away from Orange High School and 1.38km from Calare Public School and only 0.884km from Trinity Preschool. Connecting to the Ploughman's Wetlands across the 0.9 mile Ploughman's valley walking track. Orange Bus Line services the estate with transport running from early morning to late evening, perfect for young children attending nearby schools. A short drive up to Wentworth Golf Course, for an escape into luxury.



Contact Details:

Michael Paddison
 0414 447 467
info@contemporaryhomes.net.au

Bella Rawson Blake
 0428 777 651
sales@contemporaryhomes.net.au

please note that this plan does not have to be built on this block, if there is one you think will suit this block better please let our team know and we can quote you for that home and your preferred inclusions